

# Lapal Link

Newsletter of the  
Lapal Canal Trust

Spring /Summer  
2019



# Lapal Canal Trust

## Committee Members

**President**

**Dr Peter Best**

**Chair**

**Dr Andrew Hardie**

**CEO**

**Hugh Humphreys OBE**

**Treasurer, Membership  
and Company secretary**

**Dr Tony Whateley**

**Technical Officer**

**Peter Fisher**

**Leasowes Liaison**

**Roy Burgess**

**Fundraising Manager**

**Simon Dearn**

**Volunteer Co-ordinator**

**Denis Pike (WB&DCS)**

**Terry Stanton**

**John Hemingway (WB&DCS)**

**John Worwood (Calthorpe Res Ass.)**

**Dave Pearson (IWA)**

**David Struckett (IWA)**

**Michael Payne (IWA)**

**Malcolm Bates**

**Arthur Moppett**

**Richard Chivers**

**Lawrence Weston & Kathy d'Apice**

**Co-Chairs of Birmingham**

**University Conservation Volunteers**

**Mary Green (WB&DCS)**

**Environmental & Ecology Advisor**

Biographies of our committee can be found on our web site [www.lapal.org](http://www.lapal.org)

Founded in 1990 for the conservation and restoration of the Dudley No. 2 Canal from Hawne Basin, Halesowen to Selly Oak.

The Lapal Canal Trust is a registered charity (no 1013845) and a non-profit distributing company limited by guarantee, registered in England (no 2721675). Registered Office: 18 St Georges Close, Birmingham B15 3TP.

[www.lapal.org](http://www.lapal.org)

[www.facebook.com/lapalcanaltrust](https://www.facebook.com/lapalcanaltrust)

# Contents

**Committee Members. Contents and Diary Dates. Chair's report. News Items.**

## Progress with work.

- |                                                    |                             |
|----------------------------------------------------|-----------------------------|
| 1. Feasibility Study- Glimpse at the future        | 2. Artist view of the canal |
| 3 Planning Applications                            | 4. Pinch Points             |
| 5. Landsec Planning Application for Goodman's Yard | 6. Fundraising              |

## Engaging with the Community.

- |                                |                                    |
|--------------------------------|------------------------------------|
| 7. Working with Sense          | 8. Presenting to History Societies |
| 9. Meeting Edgbaston Residents | 10. LTC Monthly meetings           |

## Volunteer Work Parties.

- |                        |                             |
|------------------------|-----------------------------|
| 11. Leasowes Clearing. | 12. Archaeological Students |
|------------------------|-----------------------------|

## Publicity Opportunities.

- |                                 |                                  |
|---------------------------------|----------------------------------|
| 13. Restoration Conference      | 14. Securing the route and paths |
| 15. Archiving and oral history. | 16. Publicity Opportunities.     |

## Membership Application and Standing Order Form.

# Dates for your diary

- |                  |                                                                                                                                          |
|------------------|------------------------------------------------------------------------------------------------------------------------------------------|
| <b>May 2-5</b>   | St. Richard's Festival, Droitwich                                                                                                        |
| <b>May 11-12</b> | Open Weekend at Coombeswood                                                                                                              |
| <b>May 13</b>    | All Party Parliamentary Group for Waterways, House of Commons (Andrew, Simon, Lawrence & Kathy will attend)                              |
| <b>June 15</b>   | Selly Oak Park Festival (volunteers needed)                                                                                              |
| <b>July 13</b>   | Canal History Meeting, Birmingham University (details to follow)                                                                         |
| <b>July Mid</b>  | Weoley Festival                                                                                                                          |
| <b>Sept. 21</b>  | Annual Walk-the-Line, 12 noon at Scout Hut                                                                                               |
| <b>Nov. 2-3</b>  | 250th anniversary of the first canal reaching Birmingham. BCNS, CRT, IWA, WB&DCS and Lapal Canal Trust will be organising a celebration. |

## Chair's Introduction by Dr Andrew Hardie



I'm delighted to welcome you to the Spring /Summer edition of Lapal Link, which contains information about the range of activities currently ongoing concerned with progressing the restoration of the Canal, engaging with the community whose support we are dependent on, fundraising, and publicising the venture. This year, the Co-Chairs of Birmingham University Conservation Volunteer group have joined our committee and

are making a significant difference, both with helping with volunteer work as well as assisting with publicity, using their Social Media skills by introducing a Twitter account and greatly increasing the reach of our Facebook page; the last Facebook entry was shared over 70 times and reached over 35,000 - a ten-fold increase in awareness.

We are also very pleased that the Deputy Lord Mayor of Birmingham, Councillor John Lines, has managed to attend our meetings, and are grateful for his support, with his enthusiasm stemming from many days walking along the canal in his younger days as well as fishing in it; he well remembers the attraction and value of being by water, which is something we would all recognise , and wish to publicise. We also wish to thank the Community Partnership for Selly Oak (CP4SO) and the Friends of Selly Oak Park for their interest and support.



Staircase lock featured in the Feasibility study

Finally, I personally wish to thank our Committee of 18 for their advice and backing, and also note the support we receive from our partner societies : the local branch of the Inland Waterways Association (IWA), Birmingham Canal Navigations Society (BCNS), the Worcester Birmingham & Droitwich Canals Society (WB&DCS), and the Coombeswood Trust.

## Progress with the work

### 1. Feasibility Study- glimpse at the future

The Feasibility Study has been widely distributed and is available on our web site with links from our Facebook page. It's an invaluable aid to our fundraising campaign. One interesting aspect covered is the tantalising possibility that the combination of Marina, Staircase Lock and Weoley Castle will become an attractive tourist destination with jobs being created.



### 2. Artist View of the Canal

We are fortunate that our Feasibility Study has two eye catching pictures by talented staff of Moss Naylor Young; the Park Bridge by IT Specialist Tamarisk Kay which is reproduced on our front cover and the Staircase Lock with café for visitors by Graphic Designer Marc Zander. We are considering adopting the bridge as a logo, possibly with the addition of a walker and/or cyclist on the tow path as we need to appeal to all canal users.



### 3. Planning applications

We need planning approval for three areas before work can start.

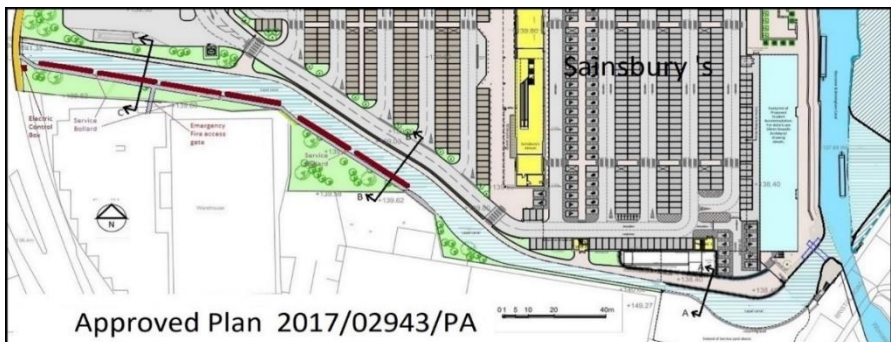
1. The route across the Selly Oak Shopping Park.
2. The Swing Bridge,
3. The turning area.

The first two planning applications were submitted by the Lapal Canal Trust and have just been approved. At the end of March, Landsec, the developer, has submitted an application for Goodman's yard also referred to as Whitehouse's Wharf, this includes the turning area, a minimum of 400m<sup>2</sup> of public open space and a disability compliant bridge linking the new shopping area to the centre of Selly Oak.

Confirmation that the plans had been approved was the opportunity to increase awareness and raise funds by distributing a press release, also a Facebook announcement which reached over 35,000.

### Summary of the Press Release.

#### Planning Approval Granted for Lapal Canal Trust's £1.2 Million Restoration of the Dudley No 2 Canal in Selly Oak



City Council. The plans are also supported by the local community and the Canal & River Trust, who suggested a number of improvements to the plans.

In the early 1800s, Selly Oak industry was developed around the canal junction and the Lapal Canal Trust feels it is important to protect and restore this important heritage link with the past. The restored waterway stands to benefit the environment in several ways, from alternative transport links, to promoting leisure activities which benefit the wellbeing of the community, to be a wildlife corridor, connecting green spaces together. Residential moorings are included in the plan, the income from which will be used by the Trust to help with ongoing maintenance costs on the canal.



Artist Impression from Glenn Howells Ltd



How it looks today

## 4. Pinch points



Along the route of the canal there are two pinch points to be moved, we are in discussion with NFU Mutual Asset Manager about moving the fence. NFU mutual are doing their best to help and are seeking the approval of their tenants. The Lapal Canal Trust wrote to the CEOs of all 12 retail units asking for their help. We

received positive replies with no objections. We are showing an example of a very supportive reply from Carpetright.



Stores on  
the Battery  
Retail Park with the  
restored Dudley no2 Canal

**Email received from Tim Lovegrove. Carpetright  
Property Director**



Hugh,

The attached letter from Lapal Canal Trust addressed to our CEO Mr Wilf Walsh has been passed for my attention.

I can confirm that, in principal, subject to contract and without prejudice, we would be agreeable to entering into a Deed of Variation to relinquish our rights over the part of the service yard that projects into the proposed route of the canal as shown on the attached letter.

I can confirm we would not seek reimbursement of our legal costs for dealing with the Deed of Variation and are willing to bear our own costs in this matter and hopefully the other affected tenants and the Landlord also acquiesce to this. We have written to our Landlord and the other tenants confirming this.

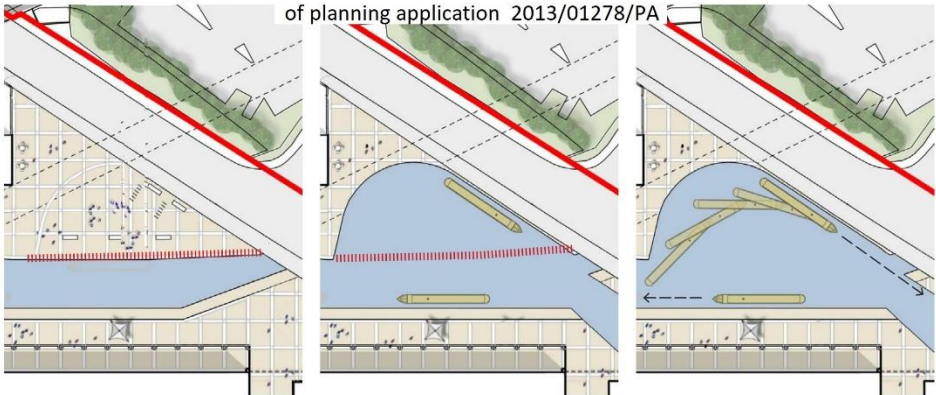
Regards Tim



## 5. Landsec Planning Consultation for Goodman's Yard / Whitehouse Wharf

Landsec and their Architect Piper Whitlock have produced a very good design to include a wild life area, a disability compliant bridge over the canal, preserving the lime kiln remains, 400 m2 of public space and the area for the future winding hole. Unfortunately, they have moved the turning area for entry and exit to the canal and we have objected to this important part of the design.

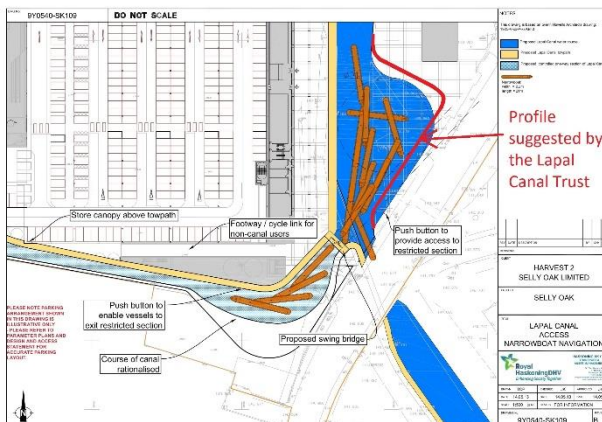
Drawing from Glenn Howells illustrative report include as a condition of planning application 2013/01278/PA



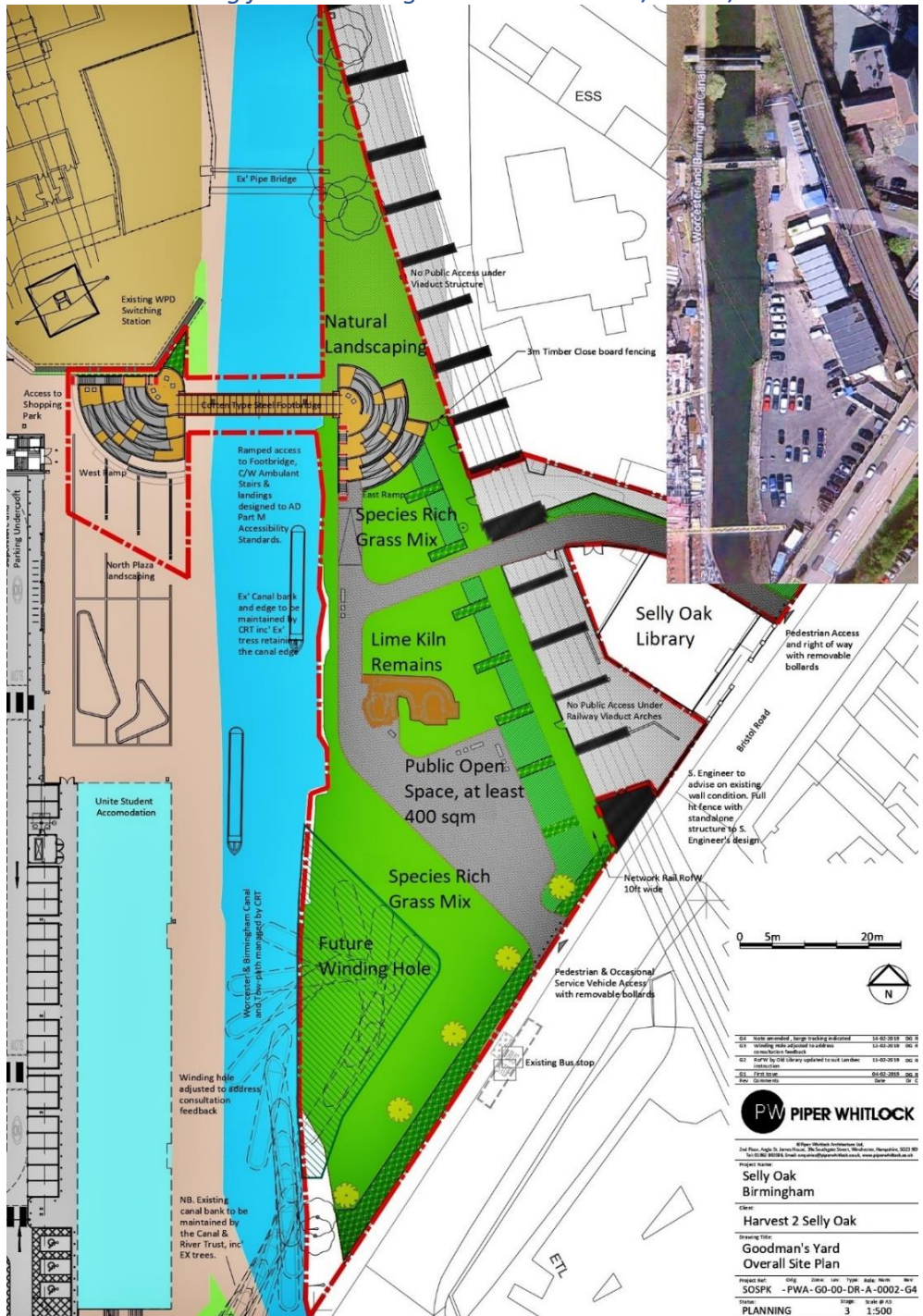
We have met the Chairs of the three local canal societies of which the Lapal Canal Trust is a member, i.e. The Inland Waterways Association, The Birmingham Canal Navigation Society and the Worcester-Birmingham & Droitwich Canals Society. They are all supportive and are keen to support us with written objections. In

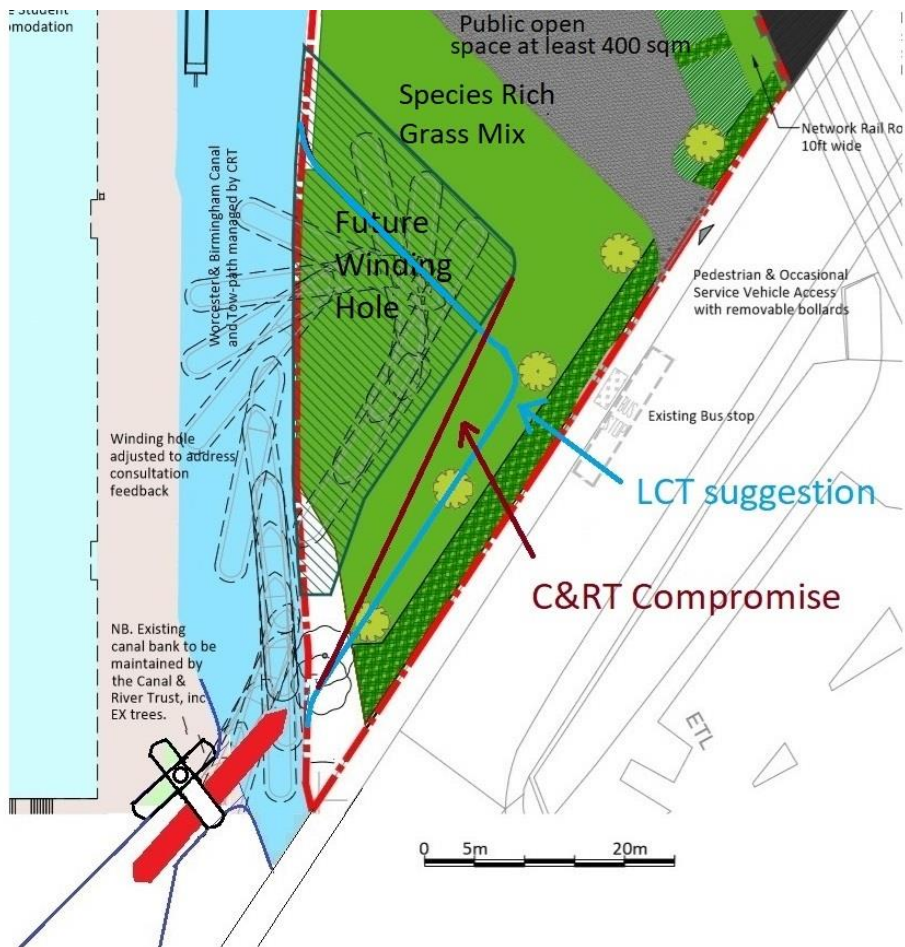
addition to the position of the area to allow boats to enter and exit the new canal safely, we also have an issue with the height of the area identified on the Site Plan and shaded in green as "Species rich grass mix". We need this to be at a height of between 138.2m and 138.4m, this is the

(Continued on page 11)



# Drawing from Planning Consultation 2019/02517/PA





same height as the area identified as public open space and 300mm to 500mm above canal water level. We are requesting that the correct height should be a planning condition. We understand from discussions with the developer Landsec that they are planning to leave between 2m and 1m depth of soil above the area around the winding hole. This will be very disruptive to remove later and of course a significant cost to the Trust. The section 106 agreement only requires the canal enabling entity (aka Lapal Canal Trust) to remove soil from the winding hole area. and not to landscape adjoining areas. You will remember we had a similar issue with excess soil across the Shopping Park when 2500 m<sup>3</sup> of additional soil had been left and depending on the level of contamination will cost £120,000 to £200,000 to remove. Our cost estimate includes this additional cost which could have been avoided.



## 6. Fundraising

The Lapal Canal Trust appointed one of our members Simon Dearn as our Fundraising Manager. Simon has been working tirelessly firstly in approaching the 65 charities identified by our consultant 'Gifted Philanthropy' as likely to be supportive of the Lapal Canal Trust work in improving our environment; retaining our heritage; and generally working on a project to benefit the community.

We have set ourselves an initial target of £2m to restore two sections of the canal to the end of Selly Oak Park. Currently we are focused on raising the funds needed for the first 340m of canal across the Selly Oak Shopping park and the turning area. Restoring this section of canal and the winding hole is estimated to cost £1.2m, utilising the Section 106 Agreement the developer will provide £500k leaving the Lapal Canal Trust with the task of raising £700k. £180k has been raised in the first 5 months.

We would like to thank the following for their generous contribution to this project - Headley Trust, Careys, GJW Turner Trust, Henry James Sayer Charity, Worcester Birmingham & Droitwich Canals Society, Inland Waterways Association, Heritage Lottery Fund and members of the Lapal Canal Trust.; and more recently from - Jabbs Trust, Rowland Trust, Grimmitt Trust, Patrick Trust, Gowling WLG, Geoff Hall Trust, Collins /Sayer Trust, Birmingham Common Good Trust, Richardson Foundation, donation in memory of Dr Ian Langford, and subscribers of canal magazines.

The trust is actively looking for more financial support. Contact details for donations can be found at the back of this Newsletter and on the web site: [www.lapal.org](http://www.lapal.org) or on our Facebook page: [www.facebook.com/lapalcanaltrust](http://www.facebook.com/lapalcanaltrust)

The Trust is a Charity recognised by Amazon Smile, so please when ordering from Amazon use Amazon Smile with the Lapal Canal Trust as your nominated charity. The trust will receive 0.5%

### Advisory Board to Oversee and Advise the Lapal Trust Committee.

<b>John Hudson OBE.</b>	Chair of C&RT West Midlands Advisory Board Formerly High Sheriff of West Midlands and for 20 years Chairman of Birmingham Airport.
<b>Peter Mathews CMG.</b>	Past Chair of West Midlands Waterways Partnership.
<b>John Cloughton.</b>	Retired Chief Master of King Edwards School.
<b>Steve McCabe.</b>	MP for Selly Oak.
<b>Laura Shoaf.</b>	Managing Director Transport West Midlands.
<b>David Cox OBE.</b>	Bike West Midlands Network.
<b>Traci Dix-Williams.</b>	CEO Dudley Canal & Tunnel Trust.
<b>Beverley Nielsen.</b>	Director of Institute for Design & Economic Acceleration (IDEA), Birmingham City University.
<b>Anthea McIntyre.</b>	MEP for the West Midlands.
<b>Tristan Chatfield.</b>	Councillor for Weoley and Selly Oak Ward.
<b>Nicholas Crombie.</b>	Trustee Birmingham & Black Country Wild Life Trust.



## Engaging with the community

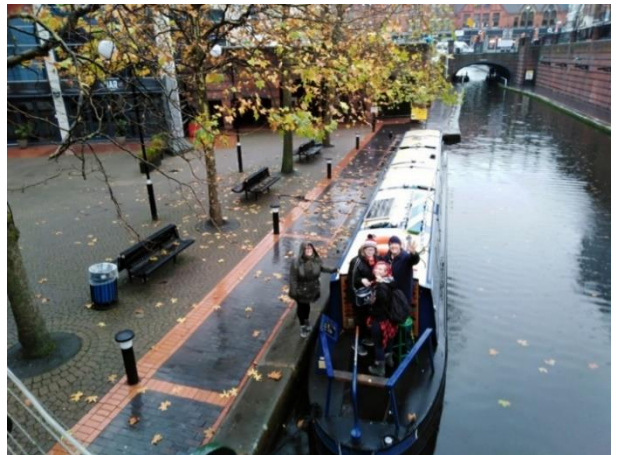
The Lapal Canal Trust Committee warmly encourages everyone interested to participate in planned events, share their views, and help us to decide on development of the restoration of this important historic Birmingham Canal

### 7. Working with Sense

We are privileged to have the opportunity of working with SENSE and their team of dedicated carers led by Jon Fearn and Helen Ogbourn. For most its their first time to enjoy a new experience. For the larger charities we are approaching for support we have a significant bonus of being able to demonstrate that we are working with the community. We have included a report on the three most recent trips, these are featured on our Facebook page and Web site with the most recent reaching over 12,000 viewers.

#### December 18

Our final trip for 2018 including a popular trip to the library, nice and cosy on the boat with central heating and a wood fire. Also, a special hot toddy recipe for the captain as he steered an erratic return course to Selly Oak.



## January 19

Thanks to Helen and the team of Carers from Sense we had a very enjoyable trip despite the cold wet weather, with Steve bravely defying the elements in shirt sleeves! With the Broad Street tunnel closed the Cube became a new destination. Across city views were enjoyed from the 25th floor. The people with disabilities and their Carers were treated by Marco Pierre White to complimentary cups of tea and pastries. The destination was better than the boat trip! We look forward to our February trip.



## February 19



Glorious weather for our monthly trip to central Birmingham from Sense - in Selly Oak (Last year the trip was abandoned due to ice). Another enjoyable trip with blue skies and a fantastic 360 degree panoramic view over the city

from the 25th floor of The Cube Birmingham, thanks again to the helpful staff of Marco Pierre White Birmingham.







### March 19

We were again fortunate with the weather as we departed from Selly Oak to The Cube to see the view. This time the Broad Street tunnel was open so a chance to also see the square in Brindley Place with the cherry trees in blossom. On the way back passed the junction with the Dudley No 2 Canal where the new winding hole is planned. Thanks to Jon, Helen and team of carers for a great day.



## 8. Presenting to History & Canal Societies

As always, the Lapal Canal Trust is very pleased to have the opportunity to make a presentation about the history and restoration progress on the Dudley No 2 Canal.

Our first presentation was arranged by our Committee member John Worwood to the Harborne and Edgbaston local history group of the University of the third Age (U3A). Thanks to Jane Child for arranging and for contributions to our restoration fund.

Then we were invited by Ivor Caplan to meet the Stourbridge U3A canal group. In particular thanks to group leader Brenda Stevenson for the arrangements and to the audience for excellent questions. On the 15th of April the group visited Selly Oak and walked the canal route to California. The Lapal Trust is pleased to have a chance to increase awareness of the canal.





## 9. Meeting the Calthorpe Residents Society

We were very pleased to be invited to display our presentation and to give out leaflets at the recently held AGM of the Calthorpe Residents' Society. Thanks again to Liz Dancey, Vice-Chair, for her kind invitation and support. The Calthorpe Estate covers a large part of Edgbaston which adjoins the Weoley and Selly Oak Ward where the canal is located. We have many supporters living on the estate and residents who are active Environmental and Heritage campaigners and enjoy the canal.



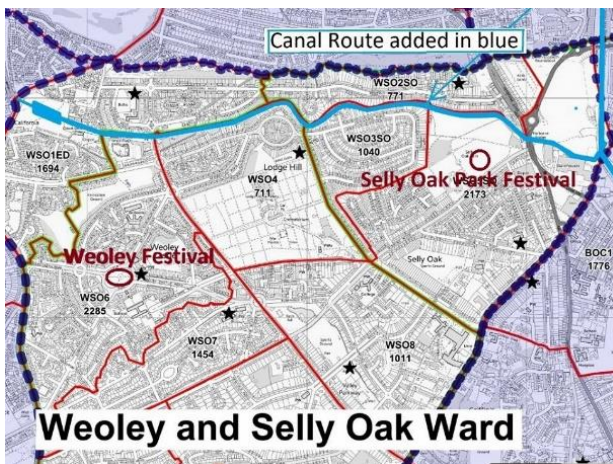
## 10. Lapal Canal Trust Meetings

Once a month, every second Monday, the Lapal Canal Trust committee meets in the training room of Sainsbury's new store (big thanks to Tom Balby, Sainsbury's store manager). The committee guides progress on the restoration work and



funding. Earlier this year, one of the meetings was a bit special: our Chair, Dr Andrew Hardie, had invited the Deputy Lord Mayor of Birmingham, Councillor John Lines, to join the meeting. John has served the city as councillor for over 35 years and represents the Bartley Green ward. The Councillor knows the canal very well (better than most of the committee) and he is very supportive of our restoration aims; we are delighted

that he has continued to come along. The 18 committee members are representatives of the community and local canal societies. If you want to help, you are welcome to attend our meetings. Recently we were delighted to be joined by the co-chairs of Birmingham University Conservation Volunteers, they have offered to help with a wide range of tasks. Their social media skills are already having an impact with Facebook "reach" up from around 3000 to over 35,000 and increasing.



# Volunteer work

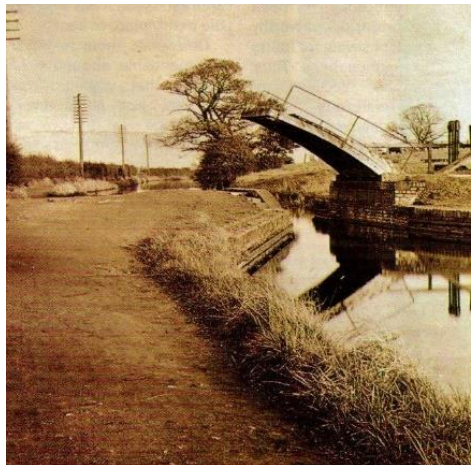
## 11. Leasowes work Party

Roy and Peter and other volunteers have been busy clearing the canal route at the Leasowes. This year they have been fortunate with the weather. Roy commented that volunteers have been keeping the route clear for 30 years. Young saplings and bramble growing in the canal bed were cut back. The work is continuing with everyone welcome.



## 12. Students work party

Big thanks to Birmingham University Conservation Volunteers and the Archaeology Society. The 12 volunteers worked to investigate the old drawbridge linking Reservoir Road to Corisande Road. The picture was taken in 1913 but unfortunately the bridge was demolished in 1928. Our restoration plan includes a reconstruction of the bridge which the Canal and River Trust archives retain the original drawings. The





students also tidied up the area up and down the canal in both directions, collecting 10 big (and heavy!) bags of litter. On completion of the excavation the soil was replaced.





## 13. Inland Waterways Association (IWA) Restoration Conference 2019

On Saturday 30th March, Andrew, Hugh and Simon attended the IWA Restoration Conference in Wolverhampton. The event, co-hosted with The Canal and River Trust (C&RT), was fully booked with 120 attendees.

The focus of this year's event was funding and there were three main sessions. The first session focused on a new IWA report entitled "Waterways in Progress" and Mike Palmer from IWA outlined the main findings of the report. The report can be downloaded from the IWA website and includes twelve case studies of successful canal restoration practices, including the Lapal Canal Trust, as an example of promoting Social Inclusion.

WATERWAYS IN PROGRESS

### 3.3 PROMOTING SOCIAL INCLUSION

LAPAL CANAL TRUST & SENSE



**“Restoration projects give space to engage with harder-to-reach communities and other groups that are often left on the margins of society.**

There is a huge amount of work still to do to restore the Dudley No 2 Canal, but when it's opened it will be a welcome amenity for boaters, anglers, cyclists and walkers and provide part of a new 21 ½ mile long route around Birmingham.

In the meantime, the Lapal Canal Trust has been working with SENSE - a national charity supporting people with complex communication needs - to give them and their carers the chance to experience canal boating aboard a monthly boat trip.

SENSE's new multi-purpose centre in Selly Oak sits next to the junction where the Dudley No2 Canal meets the Worcester & Birmingham Canal. The two-hour return cruise aboard narrowboat Ivy offers passengers the chance to explore the canal from here to Birmingham's Brindley Place, from where they are ideally placed to visit attractions in the heart of the city.

The partnership with SENSE has proved mutually beneficial in other areas too. Recently the Lapal Canal Trust held its AGM in SENSE's local HQ, and it has been grateful for funding advice from the charity.

**“For the deaf-blind adults we support, the boat is proving itself to be a warm, safe and cosy environment, which travels at a gentle pace while retaining an excitement about it that everyone is responding to. It is a unique experience and a wonderful activity for those we work with at SENSE.**

- Jan From, SENSE Activities Instructor and Development Coordinator

Steve Higham from CRT produced some evidence-based data outlining the benefits of volunteering and restoration to local communities.

There was also the chance to meet and share experiences with members from CRT, IWA and other canal societies during coffee breaks and lunch. Overall the event was superbly organised, and the food was excellent! We encourage members to read the "Waterways in Progress" publication and look out for details of next year's conference.

## 14. Securing the Route and Paths

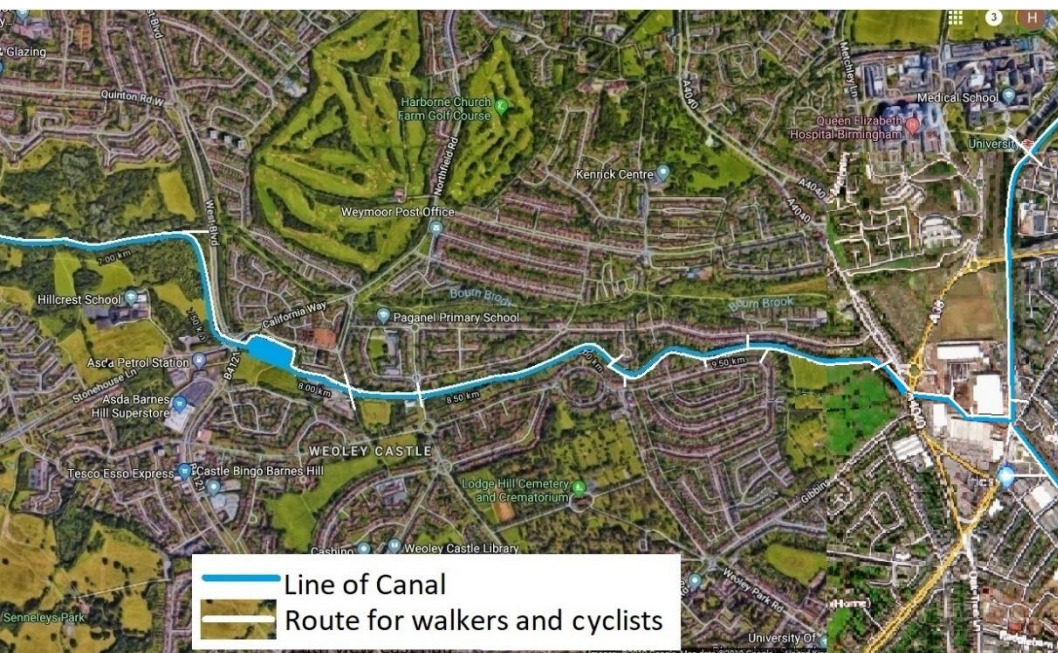
While our focus is first to raise the funds to make a start on restoring the canal to Selly Oak and then to extend the canal to California, we are mindful to ensure in discussion with Birmingham City Council and Dudley Metropolitan Council on making sure the whole route is properly secured. At the moment it is mentioned in the council plans as a requirement, but it would be better for it to be more specific. We would also like to arrange a proper path along the route. This is being actively pursued by our committee members, Dr Andrew Hardie and Roy Burgess





## 15. Archiving, Oral History, Research relating to the Dudley No. 2 Canal

Tony, our Treasurer and Company Secretary, who used to live by the canal requests “I am gradually collecting any information relating to the history of the Dudley No.2. If you have any images, published articles or personal stories you are willing to share, please contact me, Dr Tony Whateley on 07751100810 or [t.whateley@sky.com](mailto:t.whateley@sky.com). I am particularly keen to meet up with anyone who has memories of the canal in water from Selly Oak to the eastern portal of the Lapal Tunnel.”



## 16. Publicity opportunities

We are grateful for the many publications that published our Press releases, In particular Waterways World and the Birmingham Chamber of Commerce. We also had two long articles in:

### Canal Boat magazine



February issue had an excellent article by their restoration specialist and deputy editor Martin Ludgate about our project. Editor added, "Having read the article my wife commented that she now understands what we are trying to do". Martin also supports the work of the Waterways Recovery Group of the Inland Waterways Association and is an expert brick layer! Pictures are from the article showing the under croft being built also Martin

helping with our 2016 work camp. You can download a copy of the article from our web site. <http://www.lapal.org/reports/>



### Tow Path Talk

Thanks to also to journalist Sarah for excellent article on the fundraising and restoration plans for the Dudley No 2 Canal. In particular thanks to the readers of the Newspaper for their generosity in supporting our appeal for funds.

The article can be down loaded from our web site

<http://www.lapalcanal.co.uk/download-attachment/1627>



# Lapal trust launches £2m appeal to restore historic canal

LAPAL Canal Trust has launched a campaign to raise £2 million for canal restoration in Birmingham's Selly Oak.

With the opening of the new Sainsbury's store in Selly Oak, the way is now open to start work on converting the greenway which safeguards the canal route into a canal; and to start on the restoration of the Dudley No.2 Canal from Selly Oak to Barnes Hill (California).

The greenway passes underneath Sainsbury's goods delivery yard and provides a clear route to Harborne Lane Bridge.

An agreement with the developer includes the provision of sheet metal piling of both the canal route and the winding hole needed for boats to turn and enter the canal. The Landsec/Sainsbury's partnership will also provide £500,000 as a contribution to completing the canal.

The trust will be responsible for removing the soil from the canal and winding hole, arranging for the services under the towpath to be moved, building a swing bridge to replace the towpath at the junction and making the canal route waterproof.

The £2 million the trust plans to raise will enable the canal to be completed across the Sainsbury's site and extend to the end of Selly Oak Park.

Dr Andrew Hatfield, chairman of the Lapal Canal Trust, said: "We are grateful for the help received from Sainsbury's, Landsec and Birmingham City Council, and in partnership with the local community we look forward to the canal link being restored."

## Protect wildlife

"The restored waterway will greatly benefit the environment and help to protect the wildlife thriving by the canal."

He continued: "In the early 1800s Selly Oak industry was developed around the canal junction and we feel it is important to protect and restore this important heritage link with the past; the canal is also an important boost to leisure activities to benefit the well-being of the community. The new water feature will greatly enhance the centre of Selly Oak."

"We plan a vigorous publicity campaign with individuals and companies to make everyone aware, and we have started approaching the 65 charities identified as potential donors."



Canal restored across the Battery Site

A plan showing the canal restored across the Battery site.



The plan for the restored canal in Selly Oak Park.

"We are all proud of our Birmingham canals and we want to make sure that everyone has the opportunity to contribute."

The restoration of the canal has broad support, including local community groups, councillors, MPs and MEPs. Andy Street, mayor of the West Midlands Combined Authority, said: "I am hugely welcoming of the restoration project, it would be a brilliant addition to Birmingham."

Saigh Bhatti, the newly elected president of the Greater Birmingham Chambers of Commerce, said: "Since the chamber was established in 1813, it has always been supportive of the development of canals in Birmingham: first for commerce, and now as a major tourist attraction. Walkers and cyclists will gain a new city centre access route away from busy roads."

The Lapal Canal Trust was established in 1990, when its founding members had the ambitious vision of restoring a historic, but derelict, section of the Dudley No.2 Canal.

This group of inland water, heritage and environmental enthusiasts grasped the potential for using modern engineering methods and materials to reclaim the 5.5-mile lost Lapal Link.

## Historic endeavour

Lord Dudley's building of the Dudley No.1 Canal in 1775 was a historic endeavour that created an important waterway between Stourbridge and Birmingham. It led to the creation of the Dudley No.2 Canal in 1798, so that a new southern route to supply goods and coal to London could be opened up - the first Birmingham bypass.

The objective is to restore the 1.5-mile route from the Worcester Birmingham Canal to California, split into five stages. A feasibility study partly funded by the Heritage Lottery



Hard-working supporters of the Lapal Canal Trust are set to continue their restoration work. PHOTOS SUPPLIED

Fund has been completed by specialist canal consultants Moss Naylor Young.

The trust is seeking funding for the first two stages, which will result in half a mile of restored canal. This requires the completion of the 0.2-mile section through the Battery site and the 0.3-mile stage along the north side of Selly Oak Park.

Completion should make it easier to raise the funding needed for the next three stages.

The restoration scheme promises to transform and celebrate the historic landscape in Selly Oak, as well as introducing additional boating opportunities for canal tourism. It will provide a new recreational route for walkers,

joggers, cyclists and anglers, as part of a wider network of canals and leisure paths; preserve the area's heritage for future generations to understand and enjoy; provide an opportunity for the community to be engaged; develop educational initiatives with local schools; enhance employment opportunities in the immediate area; promote the learning of construction skills; create a haven for wildlife in an urban setting and encourage the establishment of new cafes and canal-side restaurants.

Follow the progress of the project on [www.lapal.org](http://www.lapal.org) and [www.facebook.com/lapalcanaltrust](http://www.facebook.com/lapalcanaltrust)



An illustration of how a busy new waterside amenity in the heart of Selly Oak might look.

## NEW FREE APP!

# TOWPATH TALK

Towpath Talk is Britain's biggest and most popular inland waterways publication. It serves the waterways community with all the latest news and there's everything you need to know about boats, marinas, wildlife, conservation, heritage and fantastic days out too.

The Towpath Talk app is the perfect way to access the newspaper you love on your smartphone or tablet. You'll find the same range of news and features, absolutely free every month on your mobile device.



DOWNLOAD NOW FOR FREE:



# Donation / Membership Form

**I/We would like to pay by:**

**Standing Order:** Please complete the SO form below and post to your bank

**Bank transfer:** Please remit to Lapal Canal Trust, HSBC, Account No. 91517856, Sort Code: 40-23-03 using your last name as the reference

**PayPal:** Please visit our website [www.lapal.org](http://www.lapal.org)

**Cheque:** Please make payable to Lapal Canal Trust and send to  
Dr T L Whateley, Lapal Canal Trust, 285 Harborne Road, Birmingham, B15 3JB  
Phone 07751100810

**Are you eligible for Gift Aid relief: Yes / No**

## Bank Standing Order Form

To: Your Bank

Name .....

Address .....

.....

Post Code: .....

Your Sort Code: .....Your Account Number: .....

Your Account Name: .....

Please pay £                      annually from 1st                      until further notice to:

Lapal Canal Trust. HSBC    Account No. 91517856 Sort Code: 40-23-03

Signed: .....

Date: .....

# Membership Application Form

(Regd Charity no: 1013845)

I / We wish to become members of the LAPAL CANAL TRUST

Name:.....

Address:.....

.....Postcode.....

Phone No:.....Email Address:.....

## GIFT AID:

As a registered charity the Trust is able to claim  
gift aid from basic rate taxpayers

Please indicate if you are willing for us to do this:

YES / NO I AM / I AM NOT A BASIC RATE TAXPAYER

<b>Membership Categories &amp; Rates</b> <b>(Please State Amount in the Appropriate Box)</b>			
TYPE	ANNUAL	10 YEAR	STATE
Adult	£12.00	£108	
Family or Couple (inc. Children)	£20	£180	
Pensioner/Junior/F. T. Student	£6	£54	
Corporate	£30	£250	

Signature:.....

I / We enclose full payment of £.....

Please make cheques payable to: Lapal Canal Trust  
and return this completed form and remittance to:

Dr Tony Whateley, LCT Membership Secretary,  
285 Harborne Road, Edgbaston, Birmingham B15 3JB  
email: [membership@lapal.org](mailto:membership@lapal.org) | Telephone 07751 100810

Payment can also be made via PayPal from our website [www.lapalcanalproject.co.uk](http://www.lapalcanalproject.co.uk).  
Please also send an email to: [membership@lapal.org](mailto:membership@lapal.org) if you join or rejoin via PayPal.



Payment by Standing Order. Please complete the form on page 26.

I agree that the Lapal Canal Trust will hold membership details in accordance with GDPR May 2018 and does not share this information with any other organisation and may send me future communications. YES ☐

The Lapal Canal Trust is a registered charity (no 1013845) and a non-profit distributing company limited by guarantee, registered in England (no 2721675) Registered office: 18 St Georges Close, Birmingham, B15 3TP.

Founded in 1990 for the conservation and restoration of the Dudley No. 2 Canal from Hawne Basin, Halesowen to Selly Oak

My Main Interests are:

Please tick relevant box / boxes

The Entire Lapal Canal	
Western End (Halesowen)	
Eastern Section (Selly Oak)	
Angling	
Boating	
Conservation	
Environment	
History / Heritage History	
Walking / Jogging / Cycling	

*If you can help with IT matters and Newsletters  
then please contact [membership@lapal.org](mailto:membership@lapal.org)*

**Website:** [www.lapal.org](http://www.lapal.org)

**Facebook:** [www.facebook.com/lapalcanaltrust](http://www.facebook.com/lapalcanaltrust)

**Twitter:** [@LapalCanalTrust](https://twitter.com/LapalCanalTrust)