

WORCESTERSHIRE'S
VALE & SPA



OFFICIAL PROGRAMME

FRIDAY 2 MAY TO MONDAY 5 MAY 2025

VINES PARK

www.strichardsfestival.co.uk

FREE ADMISSION

 SRCF2025





Key



Event Site



Event Information



First Aid



Railway Station



Bus stops



Coach drop off points



Public toilets

P Parking

- | | | |
|--|--|---|
| <p>1 High Street
WR9 8EW (short stay)
1 minute walk to event</p> | <p>4 Lido Park
WR9 8AA (long stay)
6 minute walk to event</p> | <p>7 St Andrews (Saltway)
WR9 8EQ (long stay)
9 minute walk to event</p> |
| <p>2 Ricketts Lane
WR9 8EW (short stay)
2 minute walk to event</p> | <p>5 Covercroft
WR9 8HE (short stay)
6 minute walk to event</p> | <p> National cycle route</p> |
| <p>3 Friar Street
WR9 8EQ (long stay)
3 minute walk to event</p> | <p>6 Covercroft (Day Centre)
WR9 8QU (short stay)
6 minute walk to event</p> | |



For further information visit
www.strichardsfestival.co.uk

X @Droitwichfest

f Droitwich Spa Festivals

f SRCF2025

Supported by



Funded by
 UK Government

Please note: Event timing and content will vary over the weekend.

Programme correct at time of print and might be subject to change.

WELCOME TO THE



St Richard's Canal Festival started in 2007 and has grown rapidly over the years. We are pleased to say that we have organised a variety of family entertainment with a great day out promised. With free admission all May Bank Holiday weekend, why not enjoy yourself in this historic salt town.

The festival celebrates the life of St Richard the Spa's Patron Saint, who – as legend has it – made the town's brine well flow again in the Middle Ages. It offers attractions to suit all ages from live entertainment to a dog show, and boat trips on the Droitwich Canal. This year's event is centred round a canal theme with a different topic for each day of the weekend. Saturday is 'Boating', Sunday is 'Sport' and Monday is 'Animals'.

This year's event has been organised by The Worcester-Birmingham & Droitwich Canals Society, Droitwich Spa Town Council and Wychavon District Council. The organisers would like to thank the many local groups and businesses that help in its organisation, provides sponsorship or runs activities and attractions.

Special thanks go to the Canal and River Trust whose continued help is very much appreciated.

Highlights of the 2025 festival include:

- **Dog Show** (Mon) • **Live music** • **Real ale and cider bar**
- **Children's activities** • **Arts and crafts** • **Community stalls**
- **Catering zone** • **Boating Festival** • **Boat trips**
- **The 'Great Droitwich Duck Race'** (Mon, 4.30pm)





FRIDAY 2 MAY

Food and drinks will be available throughout the weekend

ENTERTAINMENT

6.30–8.30pm Glamsparrow

9–11.15pm The Lost Notes

SATURDAY 3 MAY

Food and drinks will be available throughout the weekend

ENTERTAINMENT

1.45–2.45pm Droitwich Community Choir

3–4.45pm Kingswinford Concert Band

5–6.45pm Joe Thomas - George Formby Tribute
plus

7–8.45pm The Tracer Band

9–11.15pm The Reflections

DROITWICH BARGE CANAL

10am–4pm Pamela May Boat Trips

ARTS AND CRAFT STALLS

10am–5pm Local traders selling a wide variety
of goods

SUNDAY 4 MAY

Food and Drinks will be available throughout the weekend

ENTERTAINMENT

- 1-1.45pm** Alvechurch Choir
- 2-3pm** I Sing Choir
- 3.15pm** presentation of boaters awards
- 3.30-6pm** Mel and Him
- 6.30-8.30pm** Aardvark Stew
- 9-11.15pm** Skabucks

ARTS AND CRAFT STALLS

- 10am-5pm** Local traders selling a wide variety of goods

BARGE CANAL BOAT TRIPS

- 10am-4pm** Pamela May Boat Trips



MONDAY 5 MAY

ENTERTAINMENT

- 12-1pm Got2Sing Choir
- 1.15-2.45pm Blackwell Concert Band
- 3-5.30pm Damn the Weather Irish Band

VINES PARK RIVER

- 4.30pm The 'Great Droitwich Duck Race'

DROITWICH BARGE CANAL

- 10am-4pm Pamela May Boat Trips

ARTS AND CRAFT STALLS

- 10am-5pm Local traders selling a wide variety of goods

VINES PARK

- 11am start Dog Show

Take a Boat Trip Today on our Community Boat Pamela May

Trips run every half hour. Get your tickets from Pamela May Gazebo by Waitrose Bridge.



For more information on all our trips pick up a leaflet from our stall or speak to one of our volunteers.

Phone 07938 571809

Website www.pamelamay.co.uk

HUGE FRINGE FESTIVAL | FREE FAMILY ENTERTAINMENT
MARKETS | MUSIC | SCREENINGS | POP-UP MUSEUM

THE Rik Mayall

COMEDY FESTIVAL
DROITWICH SPA, WORCS.

31 MAY-
7 JUNE
2025



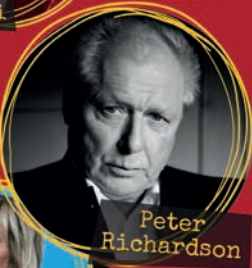
Shaparak
Khorsandi



Tiff Stevenson



Scott Bennett



Peter
Richardson



Helen
Lederer



Greg
Davies

8 DAYS
100+ EVENTS
20+ VENUES
50% FREE/PWYW



BOOK
NOW!

www.rikmayallcomedyfestival.com
Remember to book even if the shows are free!

Bromsgrove

**Beer and Cider
Festival 2025**

**3rd - 5th
July**

Celebrating



**OF REDDITCH &
BROMSGROVE
CAMRA**

**📍 BROMSGROVE
RUGBY CLUB**



BROMBEERFEST



BROMSGROVEBEERFESTIVAL.ORG.UK



James Giles

and Sons Ltd

Est.1916

The Complete
Funeral Directors



Allow our family
to care for your family



BROMSGROVE 01527 872318

DROITWICH 01905 783188

STUDLEY 01527 852213

www.jamesgilesandsonsltd.co.uk



BARRIE BEARD LTD

ELECTRICAL CONTRACTORS COMMERCIAL & DOMESTIC

40+ Years Experience

SHOP ON SITE
OPEN TO THE PUBLIC
MON - FRI
8AM - 5PM



FREE QUOTE 01527 875172

enquiries@barriebeard.co.uk

www.barriebeard.co.uk

Worcester Road, Upton Warren, Bromsgrove, B61 7ET





primrose
hospice

Care Compassion Community

You're invited



No booking
required

£6 Entry

includes a hot drink
& your choice of
delicious cake



Browse a
wonderful
selection of items
from our charity
shops!

**DON'T
MISS!**

Tardebigge Community Hall B60 3AH
Saturday 14th June 11am - 3pm

01527 889796
fundraising@primrosehospice.org
primrosehospice.org



Registered with
FUNDRAISING
REGULATOR

Registered Charity No. 700272



SCAN ME





Worcestershire Prostate Cancer Support Group

**Supporting,
Empowering
and Educating
anyone affected by
Prostate Cancer.**

**For more information about
how we can support you
please go to**

**www.worcspcsg.com
or email
contact@worcspcsg.com**



**PROSTATE
CANCER UK**

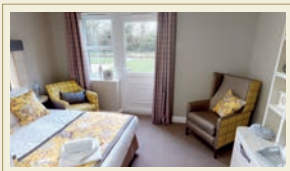


WOODLAND VIEW

Care Home

Begin your next chapter in a warm, welcoming home where you'll receive care with dignity and kindness.

Scan the QR code to visit the Woodland View Facebook page and learn more about the home and our community events.



T: 01905 917 358
A: Woodland Way,
Droitwich, WR9 7GP
W: hc-one.co.uk

Part of the HC-One Family of Care Homes



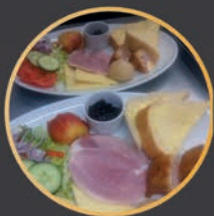


OLDE SWAN BUMBLE HOLE BITTER,
DARK SWAN, ENTIRE, NETHERTON
PALE ALE & ORIGINAL

Pub opening times are
Sunday to Thursday 12 till 10.30pm,
Friday and Saturday 12 till 11pm



As well as our home brewed ales we serve hot
food and fresh cobs
Monday - Saturday 12 till 2.30pm
and 5.30pm till 8pm



Listed in CAMRA's
National Inventory of Historic Pub Interiors

BREW61

THE BEER FARM




VISIT THE BAR AND ENJOY
ALES FROM OUR BEER FARM


www.brew61.co.uk




THE
BEWDLEY BREWERY
TAP

*Dogs Welcome
Warm and friendly*

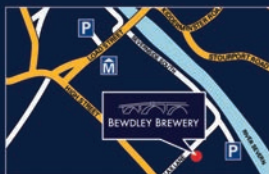
 @bewdleybrewerytap

 the_bewdleybrewery_tap



WE'RE OPEN

Thursday 4pm - 9pm
Friday, Saturday 12pm - 9pm
Sunday 12pm - 3pm





If you are interested in canals, angling, boats, boat crewing, natural history, walking, cycling, photography, industrial archaeology, local history, canal work parties, preservation, volunteering and enhancement of the environment as well as meeting up with like-minded friendly people, then please consider joining the Worcester-Birmingham & Droitwich Canals Society.

We hold regular monthly meetings at The Alvechurch Boat Centre, Scarfield Wharf, Alvechurch, B48 7SQ, on the first Tuesday of every month at 7.45pm (except July and August when we enjoy evening summer walks). If you are in the least bit curious then please come along, as non-members are always welcome. You do not need to be a boat owner as most of our members are not. The Weighbridge Pub is just at the side of the meeting room if that helps!

Presentations have included Historic Environment of the Canal in Worcester, Coal For The Ashby Canal, Cotswold Canal Restoration, Idle Women, The Cadbury Story, Lapal Canal Trust restoration, Hereford & Gloucester Canal Restoration and Canal du Midi to name but a few.

Please visit our website: www.wbdcs.org.uk
[Facebook.com/wbdcs.org.uk](https://www.facebook.com/wbdcs.org.uk)

Further details are available on our website (where you can also download a membership application form), Facebook and Twitter.

Our society owns its own narrowboat named 'Cecilia'. This is available for crewed trips for groups for half day and full day trips. Find out more on our website. Terms & Conditions Apply.

We hope to see as many new faces as possible from all sections of the community in the meeting room which is compliant with disability access.



Please visit our website: wbdcs.org.uk
and our Facebook page: [Facebook.com/wbdcs.org.uk](https://www.facebook.com/wbdcs.org.uk)



Registered Charity
Number: 500159





ABC BOAT HIRE

FREE Wi-Fi



LOCATIONS Nationwide



Rated 4.7 / 5 on



Take an
adventure
close to home
in 2025 with a
Holiday or
Short Break
on the water.



0330 333 0590
abcboathire.com

FUN DOG SHOW

MONDAY 5 MAY 2025
VINES PARK, DROITWICH SPA

STARTING AT
11AM

LAST CLASS AT
3PM

ENTRY FEE: £2 per class
(Entries will be taken on the day)

- **Rosettes and goody bags** (1st-4th place)
- **Trophies for Best in Show and Reserve Best in Show**
- **From 11am: Have a go at agility** (£2/session - pay at ringside)



ALL DOGS WELCOME!

All proceeds will go to Danemere

DUCK RACE

St Richard's Canal Festival

MONDAY 5 MAY 2025
4.30PM | VINES PARK

1ST PRIZE
£100

2ND PRIZE
£50

3RD PRIZE
£25

TICKETS £1

PURCHASE TICKETS FROM:

The Worcester Birmingham
& Droitwich Canals Society
stand during the festival

PROMOTER:

David Wheeler, 3 Corbyn Mount,
Underhill Road, Torquay TQ2 6QU.

www.wbdcs.org.uk | www.strichardsfestival.co.uk